



# Welcome to Easily from SAP Data to Insights with KNIME

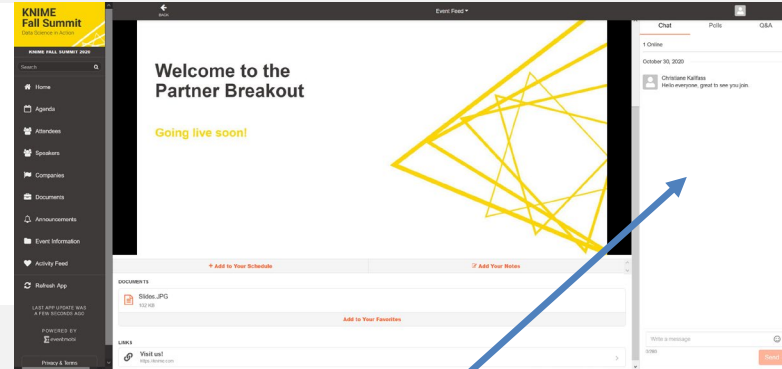
## Going live:

Chicago	12:50 PM
San Francisco	10:50 AM
New York	1:50 PM
Berlin	7:50 PM

**#KNIMESummit**

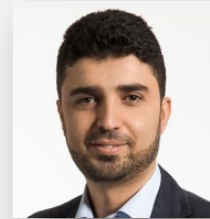
- Post in the chat where you are dialing and discuss with other attendees
- Take part in Polls
- Questions? Post them in the Q&A

Questions will be answered after the presentation.



## Today's Session:

- Theobald Software Introduction
- Xtract Universal
- KNIME Connector for SAP



Khoder Elzein  
Pre-Sales / Product  
Management EMEA



Christoph Schuler  
Pre-Sales USA

[info@theobald-software.com](mailto:info@theobald-software.com)



Founded in 2004



ISV, specializing in SAP  
integration



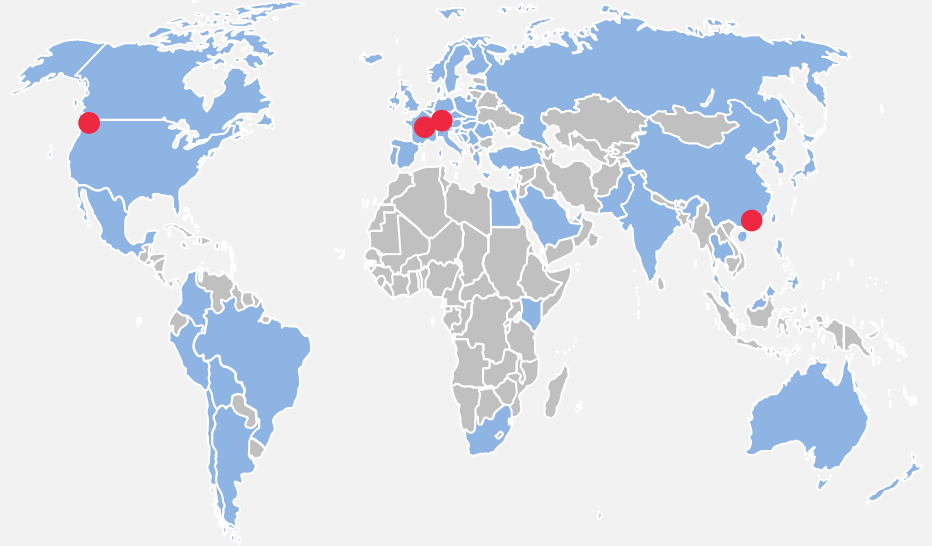
3,200 SAP customers



200 Partners



4 locations (DE, FR, HK, US)

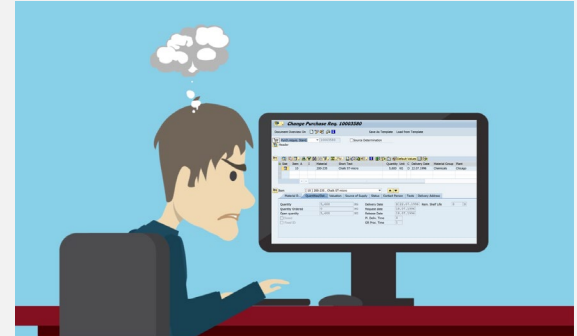


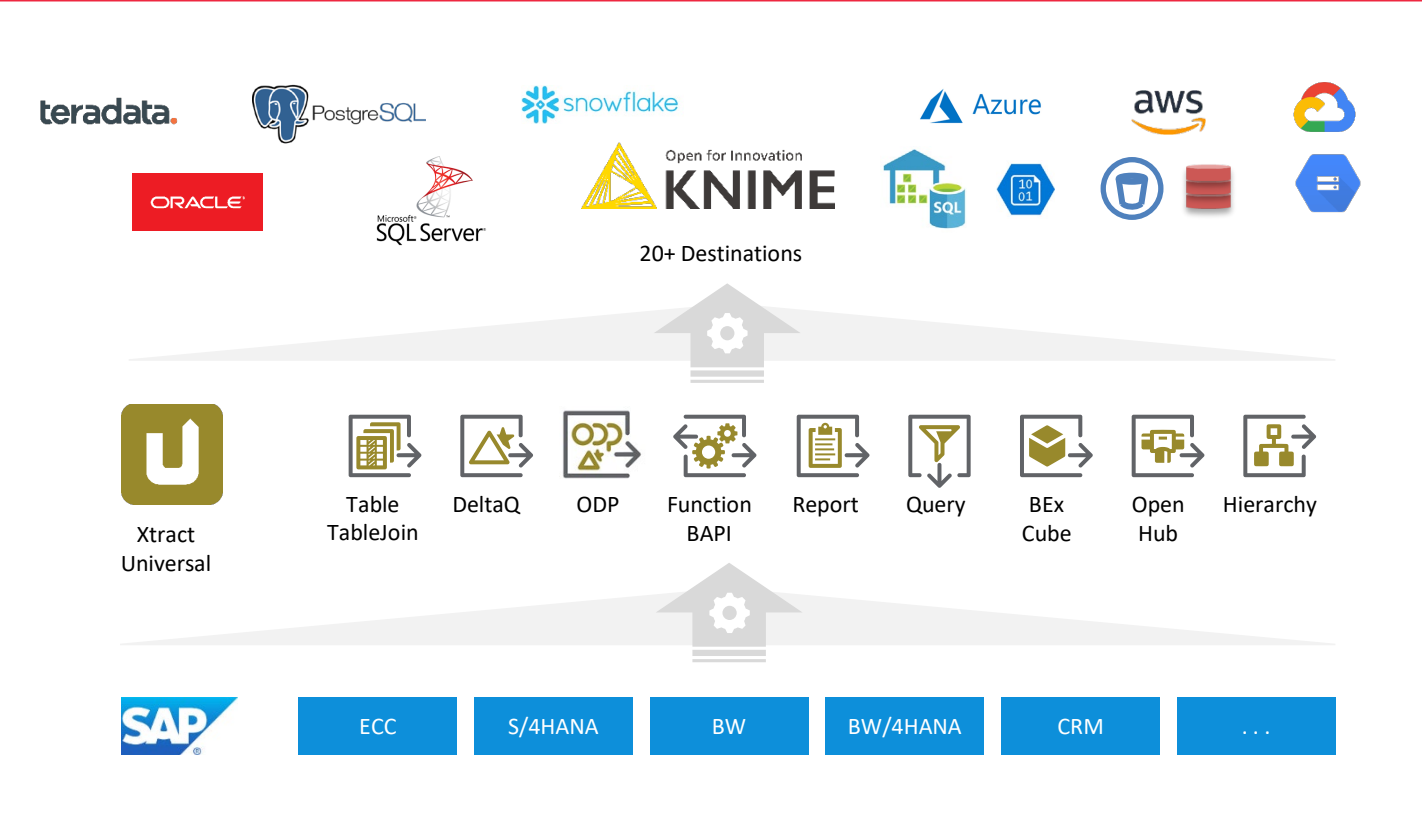
# References

# What are customers looking for?

- Need for SAP data → outside of SAP
  - BI & Analytics
  - Planning & Consolidation
  - Process Automation
- Customers are stuck in continuous ABAP dev cycles
- Solution must be
  - Reliable, performant, scale to millions of records
  - Supported for your SAP release / module
  - Secure and auditable
  - Cost-effective to acquire, implement (no-code) and maintain





# Demo: KNIME Connector for SAP



**“Theobald Software makes very affordable solutions for building integrations with SAP, that actually work!”**

~ Business Intelligence Product Owner, Global Manufacturing Company

- **Proven, reliable SAP data and process integration**

Our tools are used by 3,200 SAP customers worldwide with the highest demands for SAP integration. SAP connectivity has been our focus for 15 years and we continuously innovate. SAP is not just a checkbox for us, it is what we live and breathe.

- **Certified and up-to-date with latest SAP releases**

Our tools work with the latest SAP releases, including HANA-based systems. We also support older releases going back to SAP R/3 4.0 and SAP BW 3.0. All of our products are based on SAP-certified integration technology.

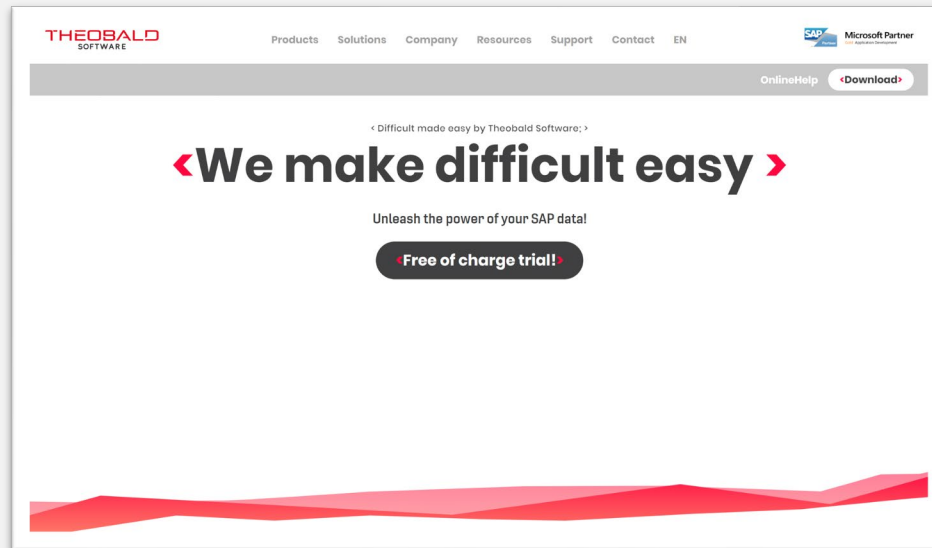
- **Extension to your solutions**

Our tools are designed to extend the capabilities of what you already have with best-of-breed SAP connectivity. Our tools are intended to work with your existing ETL tool, analytics apps, databases, workflow and collaboration tools.

- **Quick results at low TCO**

Our tools are priced very competitively and our server license model does not put a limitation on number of SAP extractions / calls, users, or SAP system connections. The tools are easy to install on standard Windows systems and straight-forward to use. Customers typically see results within days, not months.

- Talk to your Knime contact about SAP connectivity
- Free trial, support and guidance



Please type your questions in the Q&A window